

ELLIS

EARLY LEARNING
WHERE ALL CHILDREN THRIVE

ALL HANDS ON DECK



ANNUAL REPORT FY22
JULY 1, 2021 - JUNE 30, 2022

MESSAGE FROM OUR CEO



Dear Friends,

I write this note with a deep appreciation for all who made Fiscal Year 2022 so impactful at Ellis. Looking back on this year, a well-known quote from Charles Dickens comes to mind “It was the best of times, it was the worst of times,” as does the Chinese proverb, “In every crisis lies the seed of opportunity.”

FY22 began with great anticipation for experiencing our first pandemic year with vaccines in circulation for most people. In September 2021, we enthusiastically opened our new site in Jamaica Plain (JP), a community in significant need of additional childcare, particularly for infants and toddlers. Within months our JP classrooms were full and our waitlist was growing.

Unfortunately, the aggressive onslaught of the Omicron variant in December of 2021 dominated daily life at Ellis, making typical operations arduous. The situation called for “all hands on deck,” with every member of the Ellis team doing whatever was necessary to keep our classrooms open for families, and doing so happily. Despite the challenges, our students learned, grew, and enjoyed each day together.

We are proud and excited to share more details of this extraordinary year with you in our FY22 Annual report. Please continue reading to learn more and to meet some amazing Ellis families and volunteers.

As always, many thanks to our entire community including the Ellis team, our families, and the many supporters that make our work possible. As the saying goes, “it takes a village to raise a child,” and you are Ellis’s village.

With continued appreciation,

Lauren Cook

LAUREN COOK, Chief Executive Officer



What Sets ELLIS APART

- ◆ Ellis is accredited by the National Association for the Education of Young Children, putting it in the top 9% of early childhood programs nationally.
- ◆ Due to its high level of quality, Boston Public Schools (BPS) has elected to fund three Ellis preschool classrooms in connection with the BPS Universal Pre-K (UPK) and Commonwealth Preschool Partnership Initiative (CPPI) programs.
- ◆ Ellis is beloved and has a waitlist of over 600 children due to our level of quality, rich diversity, and warm learning environment.

Our MISSION

Ellis partners with families to provide high-quality early childhood education and school age programs in a warm, nurturing environment. A recognized leader in our field, we support children across the socio-economic spectrum, treasure diversity in all forms, and celebrate the joy of childhood.

MESSAGE FROM THE CHAIR OF ELLIS'S BOARD OF DIRECTORS



COLEEN DOWNS DINNEEN
Ellis Board Chair

It is with humility and pride that I reflect on our 2022 fiscal year, and what a year it was. Our community of educators, caregivers, children, and administrators remained challenged by the ongoing pandemic. Keeping programs open nearly every school day required everyone to be flexible, patient, and persistent.

We learned and grew, and during all of it, we opened a gorgeous new center in Jamaica Plain which allowed us to welcome 58 new young learners. I am so proud of what Ellis Early Learning was able to achieve.

None of this could have happened without our amazing supporters, from the \$25 first-time donors who read about our challenges in the Boston Globe or saw the January 2022 segment about Ellis on CBS national Evening News, to our consistent donors and volunteers who renewed or increased their support, and to our new major foundation and corporate funders who help in transformational ways.

Most importantly, we are grateful for the children and families who share so much of their days and lives with us. Children are the most special members of every family and of our community. When they thrive, our whole society can thrive, as well.

With gratitude for all you do to make Ellis the special place it is,

COLEEN DOWNS DINNEEN, *Ellis Board Chair*

Oh what a year with Omicron!

It's normal to reflect on a year thinking about its milestones. In our personal lives, we may think about big holidays, a new job, a special trip, or exciting moments in the lives of our children.

Pre-pandemic, Ellis tracked a fiscal year reflecting on a fun summer with field trips and lots of water play, the start of a new school year marked by a Back-to-School Ice Cream Social, children transitioning to Ellis for the first time as tiny infants, and those same babies learning to crawl and walk, and graduation for our preschoolers before their launch to kindergarten at local schools. And so many special moments in between.

When the Ellis leadership team reflects on Fiscal Year 21 (FY21), different markers come to mind. Yes, we joyfully recall the special experiences highlighted above, but we also reflect on the COVID-19 pandemic and its impact on Ellis. FY21 started with an extremely hopeful spirit. This was the year of our grand opening of Ellis's new center in Jamaica Plain. And boy, did we have a grand opening celebration planned! Pony rides, games, it was going to be epic! Then Delta hit. Delta was the first variant to make Ellis pause with concern. In retrospect, Delta was a small blip on the COVID variant screen.

Omicron marked a significant change in COVID's impact on Ellis. The variant was far more contagious, and therefore more difficult to mitigate its spread. Despite our heroic efforts, enough teachers contracted COVID that some

classrooms were forced to close from time to time. With no vaccines for young children, Ellis students and their family members were often testing positive, and COVID was to blame for many isolated holidays within our family community. We know our families suffered the effects of Omicron in their own ways.

Omicron put additional strain on the Ellis team and our families, and considerable patience, kindness, and understanding were required by everyone to manage each unpredictable day. It's during challenging times like these that Ellis's "superpower" comes to bear. The strength of Ellis's team members and their commitment to the Ellis mission is on full display. Ellis team members from every department do whatever they can to keep our classrooms open to support families. It wouldn't be uncommon to see the finance department working from reception desks, doubling as welcome ambassadors, and monitoring the front doors.

It's not surprising that, despite the obstacles, Ellis persisted, and our children thrived. Ellis proved once again it is resilient and strong in the face of adversity and can cultivate joy even through life's unexpected and difficult moments. Fortunately, the acute sting of Omicron didn't last forever. The warm weather came, and along with it, fewer cases and growing pride over what we accomplished together with Ellis's characteristic hopefulness and optimism.



*The impact of Omicron on Ellis was featured in Episode 1 of Season 2 of the acclaimed podcast, **No One is Coming to Save Us**, produced by **Neighborhood Villages and Lemonada Media**. Our CEO and some of our families and teachers had the opportunity to reconnect with journalist host **Gloria** following our first interviews in Season 1. For those who haven't listened to the podcast, we highly recommend it for a deep dive into all aspects of the early childhood education and care landscape in the U.S.*

ELLIS EARLY LEARNING

Opens in Jamaica Plain!

Ellis expanded its footprint to serve children in Jamaica Plain (JP) in September 2021. The need for high-quality early education seats in Boston is high, and the need for racially and educationally equitable learning environments is even higher. Ellis helped fill this critical need by opening its new center, serving children from Jamaica Plain, Roxbury, Roslindale, and Hyde Park. Not surprisingly, the center was completely full

within months of opening and also had a robust waitlist of families hoping to join the Ellis-JP community.

The new, completely renovated Ellis center at 555 Amory Street is 7,100 square feet and has six beautiful early childhood classrooms for infants, toddlers, and preschoolers. It also has an indoor play space and an outdoor play yard.

Thanks to the support of generous corporations, foundations, and individuals,



YASKARA CRUZ, *Ellis-JP Director*, and LAUREN COOK

Ellis raised \$600,000 to make the expansion and renovation possible. If you haven't had an opportunity to visit, please do. Ellis-JP has already proved itself an asset to the neighborhood, and we'd love to show you why.

WELCOME NEW MEMBERS OF

Ellis Board of Directors 2022/2023



Sean Curran

Sean Curran is the Owner and Principal of Waterville Consulting, a public affairs and government relations firm based in Boston. Sean is an alumnus of Ellis Early Learning, having attended our preschool program in the 1970s in its time known as Ellis Memorial. He served as Chairman of the Board for College Bound Dorchester and as the Chairman of the Deval Patrick Committee. Sean and his wife, Kelly, have three adult sons and live in Milton.



Debra McConnell

Debra McConnell is Senior Vice President of Global Communications of The TJX Companies. Her job involves communicating directly about TJX's financial matters, press releases and creating presentations for audiences ranging from retail clerks to shareholders. Deb is on the Board of Directors for the Wellesley Community Children's Center, a non-profit, and lives in Wellesley with her husband, Oriol, and two children.



Jim Geraghty

Jim is a Managing Director at Morgan Stanley, working with ultra-high-net-worth clients and their families. He is involved with many organizations that benefit disadvantaged youth throughout Massachusetts and beyond. Jim is Chairman of the Board for the Robert F. Kennedy Community Alliance, a member of the executive committee for the Boston Police Athletic League (PAL), and a member of the executive committee for Girls Inc. of Greater Lowell. Jim lives in Newburyport and has 4 adult children.



Amy O'Leary

Amy O'Leary is Executive Director of Strategies for Children, an advocacy and policy organization that works to ensure that Massachusetts invests the resources needed for all children to access high-quality early education programs. She serves as an adjunct faculty member at Wheelock College in Boston, at Cambridge College, and at Quinsigamond Community College in Worcester. Amy began her career in early education at Ellis as a preschool teacher and served as an Ellis program director for nearly 10 years.



Erin Hotaling

Erin Hotaling is a Tax Partner at Deloitte. Erin is an alumna of Bentley University, where she received a Bachelor's Degree in Accounting and a Master's Degree in Taxation. She lives in North Andover with her husband, Dean, and twin children.



Christopher Shumate

Christopher Shumate is Senior Counsel for the Global Retail Markets at Liberty Mutual. Chris is a former Ellis parent and had served on Ellis's Board of Trustees. He has been the National ERG Co-Chair leading employees of African descent and allies. Chris has three young children and lives in Milton with his wife, Jana.

STAFF HIGHLIGHT

Brenda Barreto



It's no surprise why Brenda Barreto has been at Ellis for 22 years. Ellis has shaped Brenda's professional and personal life and has led her on a path of success that she never dreamed possible.

Brenda arrived in Boston from Puerto Rico in 2000 with two young children, no English, and nowhere to live. Just one music course away from her Bachelor's degree at home, Brenda left a house and a well-paying job for a new start in her personal life.

"I lived in a shelter when I arrived in Boston, and after a while, I was discouraged and ready to go back home," Brenda says. But her former boss talked her out of that. He said he'd hire her back, but he encouraged her to stay. "You're a winner," he told Brenda. "Everything you do from here is about winning."

In the shelter, Brenda connected with a social worker who guided her path, helped her get English instruction, and put her into a program, Project 90, designed to help people integrate into society. Project 90 placed Brenda at Ellis in an internship.

"I couldn't speak well, but I was very observant," Brenda says. "I paid close attention to detail and was fast and efficient." She also loved the children, and the parents saw how their children bonded with Brenda. Brenda now says, "I didn't choose Ellis. In a mysterious way, Ellis chose me and has supported me every step of the way."

Her job at Ellis got Brenda out of the shelter and onto her career path, but tragedy struck in 2009 when her apartment burned down, and she lost everything. With a husband, two children, and a new baby, Brenda struggled to find a new apartment. Leo Delaney, the previous Ellis CEO, gave her as much time as she needed. "I can't believe how Ellis gave me so much flexible time and continued to pay me," Brenda marvels. Parents and staff also helped by donating the furniture, housewares, and clothing her family needed to make a new start.

Ellis supported Brenda because Ellis and Brenda were an ideal match. She had studied early childhood education in Puerto Rico,

"I didn't choose Ellis. In a mysterious way, Ellis chose me and has supported me every step of the way."



Brenda and her husband, Andre, in front of their new house

and preschool was her passion. "I love seeing all the changes at this age," she says, "where children are building their character and identity and creating who they are going to be in the future."

And so, over the years, Brenda held most teaching roles as her career developed, and she became Assistant Vice President of Programs in 2020. Brenda thrives on change and on the Ellis mission to innovate and improve. "Every year, every child, every family is different," Brenda says. She adds, "I thrive on change, and it's uplifting to experience the improvements we've made."

Now Ellis has helped make possible another dream: Brenda and her husband have bought a house in Taunton. Brenda credits Lauren Cook, the Ellis CEO. "Lauren is always fighting for teachers' salaries and bonuses. She knows we don't get the pay the job deserves, but my new salary made it possible for me to buy my dream house."

Lauren credits Brenda. "Brenda represents the best of Ellis. Her commitment to our mission and dedication to our families, always unwavering, has reached new depths with her considerable daily commute from Taunton. Brenda uplifts everyone around her and makes Ellis even better. There's nothing not to love about Brenda."

For her part, Brenda looks back over her decades at Ellis and says, "My commitment and appreciation are so deep. I need to give back a little of what I've been receiving for years."



Ellis Provided a Family Lifeline Nelson Family



Ellis was more than a childcare center for Jill Nelson's children, Eli and Ella – it brought joy, gave support, and provided a sense of belonging and a happy routine in a tumultuous time.

Jill had been a full-time, at-home mom until domestic violence turned her world upside down. The Department of Children and Families

(DCF) stepped in to help. "DCF set me up with Ellis and got me the help I needed to raise my kids," Jill says.

Jill worried that Eli (age 3) and Ella (14 months) would have trouble adapting to a group setting after being home with her. But they loved Ellis from the start. "Every day, they came home with so much to say. And the teachers were so loving that it felt more like a family than a school," Jill says.

Ellis also supported Jill. From her first tour, Jill felt welcomed, respected, and supported. "Ellis has a total commitment to treating everyone the same. I don't think I came across as someone in a fragile moment, and I never felt different or awkward talking with other families."

Jill grew up in an affluent suburb of Chicago. "I didn't encounter diversity until college, and I'm so glad that my kids had this experience early in life," she says. Now back in Chicago near family and friends, Jill, Eli, and Ella miss Ellis so much. "We talk about Ellis all the time. Leaving Ellis was the hardest part of our move!"

Ellis Was Worth the Wait Forbes Family



For Ally Forbes, getting her son London into Ellis was a two-year wait but well worth her patience. "Ellis is so great that families don't leave unless they have to," Ally says. But once London started at age four, Ally had an easier time with her next two kids. Logan started at 11 months and Paris at three and a half months.

Ally values the commitment of everyone at Ellis to put the kids first. "For me, the hands-on is special. Everyone is in the classroom taking care of the kids. When needed, staff people leave their offices to take care of babies." This commitment has earned Ally's trust. "I never have any worries when I drop off my kids because I know everyone will always do what needs to be done," she says.

Ally also values her kids' attachments with their favorite teachers, and wondered how they'd adapt when moving to new classrooms with new teachers. "I didn't need to worry," Ally says. "All the teachers are amazing, and the kids quickly find new favorite teachers."

Ally's children have also formed lasting friendships. Logan and Milo have been best friends from the start, and Paris and Parker since they met in the infant room. These pairs of friends are making their way through Ellis together.

Ellis supports Ally too. She has a network of parents who stay in touch, pass on anecdotes about each other's kids, and plan play dates. "Ellis is a great family-like organization for all of us," Ally says.

THE END OF AN ERA

June 2022 marked a significant milestone in Ellis's history. After thoughtful and thorough consideration and analysis, the Ellis Board of Directors made the difficult decision to close its School Age Program.

Inspired to serve the South End's children who needed additional support, our founder, Ida B. Eldredge opened Ellis in 1885. Ellis has honored her legacy through over a century of comprehensive programming for children during after-school hours and school and summer vacations.

Beloved by countless families over the years and led by terrific youth development workers, Ellis is proud of the impact its School Age Program has made.

The Ellis family support team worked closely with each of our 25 School Age Program families to ensure they were able to identify and access alternative care options that met their needs. Fortunately, nearly all of Boston Public Schools provide after-school programming, and our South End and surrounding community is rich with additional resources.

Several factors led to Ellis's decision to focus its mission on early childhood education, the most



Some of our School Age Program friends pose on their last day at Ellis, flanked by longtime staff member and School Age Program fixture, Maurice Hallett, standing at left.

prominent being a steady decline in the demand for after-school programs outside school buildings, and a dramatic and steadily increasing need for high-quality early childhood education in the city.

Ellis is proud to build on our history of serving Boston's children by providing the very best early childhood education with a focus on equity and diversity in all forms, and reflects gratefully on serving generations of school age friends.

Beloved by countless families over the years and led by terrific youth development workers

Partners in OUR WORK

CORPORATE AND FOUNDATIONS

\$100,000+

The Baupost Group Charitable Fund
Wellington Management Foundation

\$50,000+

Natixis Investment Managers
PNC Bank
The TJX Foundation, Inc.
United Way of Massachusetts
Bay and Merrimack Valley

\$25,000+

Franklin Square House Foundation
Liberty Mutual Foundation
McCall & Almy
PwC

\$10,000+

Aberdeen Standard Investments
Dean Foundation for Little Children
Foundation M
Kimco Realty
Kirkland & Ellis LLP
PURE Insurance Foundation
State Street Corporation

\$5,000+

Bain Capital
Blue Cross Blue Shield of
Massachusetts
Brookline Bank
Bushrod H. Campbell and
Adah F. Hall Charity Fund
Delta Dental
Eastern Bank Charitable Foundation
EY
Gibson Sotheby's
International Realty
Hingham Institution for Savings
Mass General Brigham
New Boston Ventures
Olivia's Organics
Ropes & Gray LLC
Social Equity Access Fund
Stewart Title Guaranty Company

\$1,000+

Amica Companies Foundation
ART Engineering Corporation
Bluestone Bank Mansfield Division
Cambridge Savings
Charitable Foundation
CareQuest
Cruz Development
DHK Architects
Highland Street Foundation
Paradigm Properties LLC
The Hamilton Company
The Mount Vernon Company, Inc.
Trinity Financial
Tull Charitable Foundation

PUBLIC FUNDING

Boston Public Schools
City of Boston Mayor's Office of Women's Advancement
Massachusetts Department of Early Education and Care
Massachusetts Department of Elementary and Secondary Education
Massachusetts Department of Children and Families

ELLIS EARLY LEARNING FUND

The Ellis Early Learning Fund is an annual program of inviting and recognizing charitable support at leadership levels.

SUPPORTER \$10,000+

Reuben and Christine Ackerman
Kathy Betts and Chip Lewis
Coleen and Ted Dinneen
Suzanne Dwyer
David and Wendy Giunta
Molly and Colin Gorman
Elizabeth Hurley
Judith and John Remondi
Mark and Etta Rosen
Kim Sinatra
Beverly Daniel Tatum and
Travis Tatum
Will and Erin Tetler

NEIGHBOR \$1,000+

Naomi Aberly and Larry Lebowitz
Benedicta Acosta
Ann Beach and Peter McManus
Heather Blier
Graham Brewster
Chip and Janine Broadhurst
Brenna Callahan
Lynda Coye
Lauren and Andrew Cook
Abhijeet Dalvi
Meghan and Peter Dichiaro
Fernando and Charlene Domenech
Amy Donovan
James Doyle
Beth Edwards Harris
James Ellis
Susan Furtado
Daniel and Jill Garrison
Mark and Natalie Gauthier
Paula Gilligan
Chuck and Leslie Gordon
Stacy and Brad Greene
Gail Hanson and Richard Graebner
Emily and Tim Hughes
Donna Housman
Peter Hurtgen
Thomas Joyce
Stephen and Jill Karp
Michael Kearney
Patricia and Matthew Keenan
Emily and Brian Kolle
Ben Krass and Mary Holper
Joseph Labresh
Margit Liander and Jose Luengo
Shenkiat Lim and Cynthia Schoettler

Cynthia Lyons
Ian and Teri Macduff
Liana Magner
George Marootian
Jaime Marshall
Mark Mason
Christopher Moore
Judith Moore
Elizabeth and Keith Morgan
Maureen O'Neill
Abby Paul and Dan Lynch
Morgen Peck and Morgan Lackenbauer
Kathryn and Max Pinto
Steven Pomper and Blair Hewes
Norin and Fahim Razzaque
Karen Price
Gena Rhee
Marilyn Rosh
Kristen Sands and Michael Capasso
John Sanford
Laura and Tom Schumacher
William Slimbaugh
Molly and Noah Stapleton
John Jr. and Emilie Schleer
R. Michael and Susan Scott
Chris and Jana Shumate
Beatriz Pina Smith
Charles Stefanini
Lisa Sunwoo and Andrew Schneller
Brian and Lindsey Swett
Bill and Susie Taylor
Karen Tucker and Jerry Avorn
Marta and Luc van Dam
David Waldman and Marian Leitner
Susannah and Andrew Wardly
Erika Wilkinson and Andrew Lynch

FRIEND \$5,000+

Jim Alexander and Tom Stocker
Warren and Renee Besser
Joe and Nancy Craven
Thomas and Shari Dicker
Kristen and Benjamin Farmer
Catherine and Keith Farrow
Martin Hall and Sarita Uribe
Daryl Hanna and Shannon
Reilly Hanna
Larry and Dianne Hughes
Kate and Tom Kush
Christine and David Letts
Tom and Donna May
Carreau and Jonathan Ryder
Kristen and Derek Vicino

The Year in NUMBERS

BALANCE SHEET: JUNE 30, 2022

ASSETS

Cash and cash equivalents	\$ 2,385,104
Restricted cash – Endowment	\$ 181,043
Accounts and pledges receivable	\$ 1,322,046
Prepaid expenses	\$ 31,619
Property and equipment - net	\$ 10,724,572

TOTAL ASSETS \$ 14,644,384

LIABILITIES

Notes payable, current portion	\$ 54,756
Accounts payable	\$ 86,785
Accrued expenses	\$ 98,483
Deposits	\$ 56,152
Long Term Debt	\$ 4,036,321

TOTAL LIABILITIES \$ 4,332,497

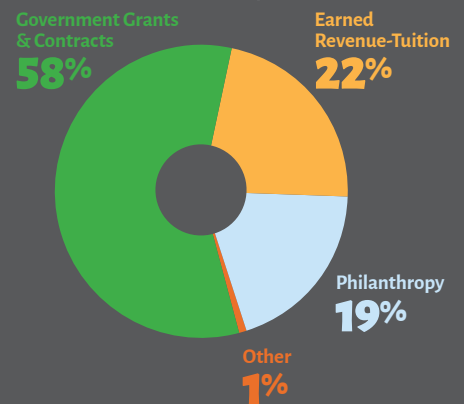
NET ASSETS

Without donor restrictions	\$ 9,705,844
With donor restrictions	\$ 606,043

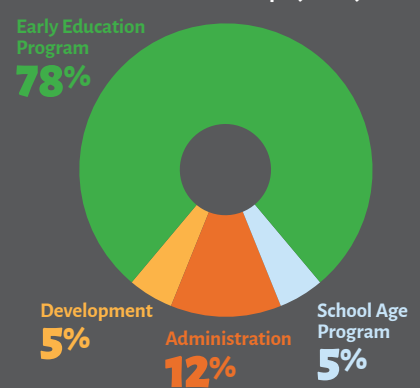
TOTAL NET ASSETS \$ 10,311,887

TOTAL LIABILITIES, NET ASSETS \$ 14,644,384

FY22 REVENUE: \$8,106,749



FY22 EXPENSES: \$6,010,483



Our Team

AS OF JUNE 30, 2022

BOARD OF DIRECTORS

Coleen Downs Dinneen, *Chair*
Fernando Domenech, Jr., *Vice Chair*
Suzanne Dwyer, *Treasurer*
Marta van Dam, *Clerk*
James G. Alexander
Kathleen V. Betts
Frank L. Davis, III
Thomas Dicker
Amy Donovan
Sylvia L. Exantus
Molly Gorman
Lawrence Hughes
Elizabeth E. Hurley
Samia Kazi
Shenkiat Lim
Melissa Menard
Sunday Taylor
Will Tetler
Erika Wilkinson

BOARD OF TRUSTEES

Kristen Vicino, *Chair*
Dannielle Pinson, *Vice Chair*
Christopher Blier
Brenna Callahan
Jonathan Carlson
Tina Chen-Xu
Shane Dunn
Catherine Farrow
Emily Hughes
Kelly Janjua
Whitney Kimmel
Ben Krass
Garrett Larivee
Kimberly D. Lucas
Abigail Paul
Carreau Ryder
Laura Schumacher
Christopher Shumate
Lindsay Sweet

ELLIS LEADERSHIP

Brenda Barreto (20+ years)
Lauren Cook
Yaskara Cruz
Patricia D. Keenan
Claire McNally
Thomas Monks (20+ years)
Tiffany Sheets (15+ years)
Aijauna Terry (15+ years)
Liz Torres

ELLIS TEAM

Fartun Abdi
Alexandria Anderson
Ramona Arroyo
Chadena Awogboro
Amanda Beland
Bohan Cao
Louisa Campbell
Shanisha Carr (5+ years)
Cherish Casey
Jeannie Chalek (10+ years)
Karizel Chapman Sanchez
Hsuan-An Chou
Jendriana Concepcion
Eglise Corchado
Thalita Correia
Rosa Cruz (5+ years)
Jennifer Daniels (5+ years)
Jennifer Dasilva (10+ years)
Alejandra De La Cruz
Surgebis Diaz (20+ years)
Monica Dinis
Juleann Diniz Gomes
Colleen Donovan (5+ years)
Natalie Dumart
Shanika Edouard (5+ years)
Robin Edwards
Tahnesha Ellis
Yasmin Emilliano-Anderson
Joy Entzminger
Keyla Feliz Guerrero
Sheila Foster
Ladez Francis
Christina Fritsch
Destiny Gabriel
Aisha Gomes
Gene Gomes
Ruana Gomes Dos Reis
Laura Gosenca
Nyna Gray-Hicks
Loretta Greenaway
Bercem Gulen
Maurice Hallett (15+ years)
Molly Herbert
Doris Hernandez
Lisa Hill
Tianna Hill
Tammy Hillery (25+ years)
Georgia Hinds
Tashalee Jackson (5+ years)
Maysie-Sophie Jean-Louis
Anna Leigh Jenkins
Alevitssandra Jesus (5+ years)
Aletssandra Jesus (5+ years)
Yufang Jiang
Gladys Jimenez Barboza
Ana Jimenez Kog
Jazmin Jones
Natalia Katz
Alexandra Keenan Wolff
Carol Kittinge
Nicole Kroll
Kasslyn Landry
Stephanie Li

Deborah Martins
Iyanna Maxwell-Perry
Kimberly McCollin Skelton
Casaundra McDonald
Gina Medor
Julia Mehl
Alexis Mitchell-Edmonds
Charmin Moreta
Carishmar Moore (5+ years)
Johanna Moscat
Elizabeth Muse
Sharon Nixon (5+ years)
Deanna Nunez
Melida Oller Pimentel
Evelyn Oritiz
Yina Pena
Leyla Pizarrp-Ayala
Jessica Podkalicki
Tiaja Powell
Nadalyze Quintana
Harriet Reilly
Althea Reynolds
Mavis Riley
Lisset Rincon
Daniela Rivera
Xena Rocha
Carolina Rodriguez
Ivone Rodriguez Dos Santos
Cynthia Rosa
Ajka Sakanovic
Avismail Santana
Adliz Santana Barreto
Kiya Savannah (5+ years)
Kalicja Sears
Vanessa Seary
Hannah Shaich
Jamalia Sheets
Sasha Sheets (5+ years)
Michelle Shillingford
Fabiene Souza
Lisa St. Hill (15+ years)
Dixiann Stanislaus
Shirley Strickland (15+ years)
Melanie Sullivan
Francis Sullivan
Jessika Supreme
Wubalech Taglo
Sahra Tahilil
Katherine Thomas
Dana Thompson
Aniya Thompson
Jamilith Valentin (5+ years)
Marjorie Valmyr
Lorena Vasquez
Kiani Walker
Matthew Wallace
Shamika White (10+ years)
Jaliyah White
Cheri Williams
Rachael Willis
Shantel Woodard
Maryan Yasin
Deanna Young




ELLIS EARLY LEARNING

58 BERKELEY STREET, BOSTON, MA 02116
(617) 695-9307 • www.EllisEarlyLearning.org

Connect with Us

 www.facebook.com/EllisEarlyLearning

 @EllisEarlyLearn

 @EllisEarlyLearning

